

## Available Information

- **Schedule**
- **Progress Report**
- **Report Card**
- **Attendance**

## Portal Etiquette

### *(Appropriate use of the portal)*

The parent portal will allow you instant access to your child's academic information, including individual classroom assignments and corresponding grades. However, grades are only shown after teachers have finished entering them and have published them to the portal. It is at the teacher's discretion when those grades are published to the portal. Certain assignments such as tests, projects, or long writing assignments take a great deal of time to grade. Parents need to understand that just because an assignment was handed in today does not necessarily mean the grade will be posted on the same day. While we encourage parents to be actively involved in their child's education, we also caution parents calling or emailing a teacher to inquire as to when a particular assignment's grade will be posted to the portal. Requests of this nature take valuable time away from the teacher's normal out of class responsibilities of grading, providing extra help and preparing for upcoming classes. Concerns regarding grades should first be discussed between you and your child. If questions still exist, please feel free to contact the teacher at school for further discussion.



### Parent Portal Technical Support

Newfane Central School District  
6028 Godfrey Road, Burt, NY 14028

716-778-6359  
[www.newfane.wnyric.org](http://www.newfane.wnyric.org)



Newfane Central  
School District

## Parent Portal Orientation



Parent Portal Technical Support  
E-mail us at:

[pyoung@newfane.wnyric.org](mailto:pyoung@newfane.wnyric.org)

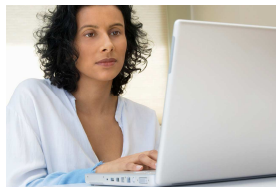
## eSchoolData Parent Portal

The Parent Portal provides you with 24/7 access to your child's academic information. No longer will you have to wait for the mail to arrive. With a parent portal account, you may log on at any time to view information regarding your child's schedule, grades and attendance.

A parent portal account provides you with a sort of one-stop shopping no matter how many children you have in the district or which buildings your children attend. The computer does all the work of correctly matching you up with your children and only your children. The family oriented design of the database

only requires a single login account for access to information for all children in the family. As you register that new kindergartener next year, their information will instantly be pushed to your portal view with no additional steps on your part as a parent. Making the process so simplified and streamlined means the additional cost of offering this access is virtually zero.

We encourage parents to take part in the parent portal by submitting a request via the school Web site. Look for a link to the portal login page, and if you do not already have an account, you may sign up for one on the login page.



**Enjoy instant 24/7 access to your child's academic information.**

## New Portal Accounts

To create a new account, please visit our site at ([www.newfane.wnyric.org](http://www.newfane.wnyric.org)) and select the Portal Login link. To the left of the login button, first time users can use the [click here](#) link to create a new account.

Tips for the account request page:

- Type your name exactly as it appears on correspondence sent from the school (i.e. if your name is Edward, do not use Ed on the account request page).
- Only sign up for one child—once your account is approved you will automatically gain access to all of your children.

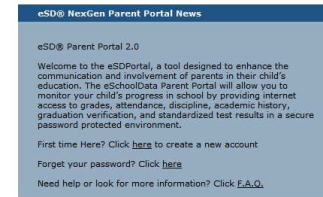
Once you have successfully submitted your account request, district personnel will review your request and approve or deny it. Once an account is approved, you will receive an e-mail containing a link to activate that account. Once you have activated your account, you are ready to login and view your child's information.

Once logged in, you may notice some of your children may have more tabs available than others. This is by design as some information is only pertinent to specific age groups.

*Parent Portal New Account Request Screen*

## Coming Soon...

In the near future, parents will be able to view and verify household information such as phone numbers, email addresses, etc. Please watch for an announcement when this feature becomes available and directions to electronically verify your information.



*Parent Portal Login Screen*

## Using Portal Accounts

To log into your portal account, please visit the district Web site and follow the links to the parent portal login page. Once at the login page, use the username and password that were used to create the account and click *Login*. Finally, you must agree to the terms and conditions of the site before gaining access to student information.

Once you are successfully logged into the parent portal, you will be brought to your home page. The home page contains links to each of your children, as well as, district wide announcements. You will also see a *My Account* link at the top of the page. Use that link to change your password at any time you feel your password needs to be changed.

To view academic information about your child, you must first select the child from the list on the home page. Once a child is selected, a tabbed browsing screen will display. Each tab corresponds to specific reporting that is generated from the eSchoolData student management system. These tabs include Report Cards, Progress Reports, Schedules, Attendance, Transcripts, Gradebooks and in certain cases may also include other information. Some tabs may not be available to all students. To view information, simply click on the tab containing the information desired. It's as easy as that.